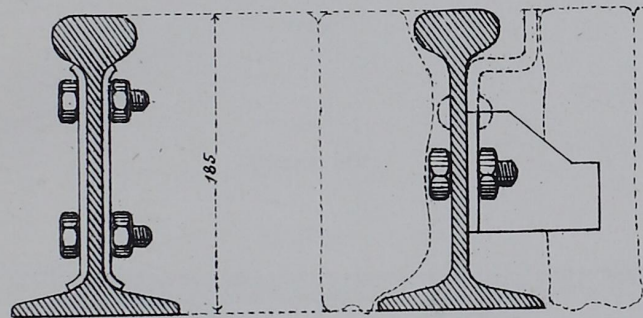


Blatt II.

## Hartwich - Schienen-Profile.

2., für Nebenbahnen.

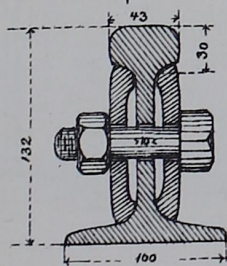
Brauereigleis in Strassburg.    Pferdebahn in Stuttgart.



Schussenried - Buchau,

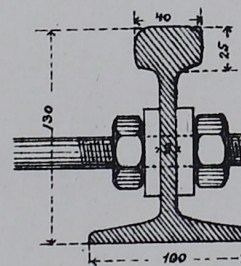
Württemberg.

Schmalspur-Project.



Gewicht pro lfd. m = 23 kg.

Felda-Bahn.



Gewicht pro lfd. m = 21,5 kg.

