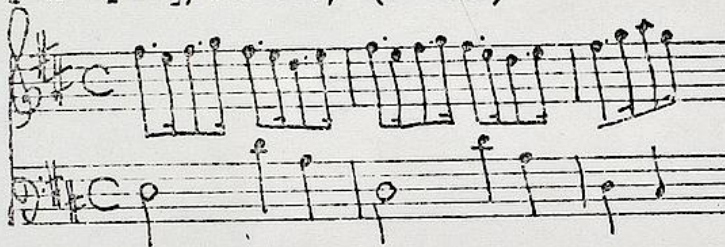


Fasch, Johann Friedrich (1688-1758)

BRD DS Mus.ms.1184/10

Ouverture/a/2 Corn:/2 Hautb:/2 Violin/Viola/Basson/e/Cembalo./  
[Incipit]/Fasch./ (D-dur)



[ohne Satzbez.] C/6/8 -  
Rejouissance 2/4 - March  
C - Allegro 2/4 - Andante  
6/8 - Allegro 2/4 - [ohne  
Satzbez.] 3/4.

Ms.ca.1740 (Graupner). 35 x 22 cm.

9 St.: vl 1,2,vla,cembalo (unbez.),ob 1,2,fag,cor 1,2.  
je 2 Bl., cor je 1 Bl.

Identisch mit Mus.ms.296/3.